



SPINNING ELEMENTS
FOR SCHLAFHORST ROTORSPINNING

CATALOGUE

APRIL 2013

www.rimaxtechnology.com



The information in this leaflet are generally correct, however,
it is not possible to lay claim to liability or guarantee.
We reserve the right to make changes which serve the technical progress.



SPINNING ELEMENTS FOR SCHLAFHORST ROTORSPINNING

MACHINES SE7-SE8-SE9-SE10-SE11

Dear Customer,

Rimax Technology is a small Italian company with the target to introduce in the market spare parts for textile machine in a good quality level at reasonable prices. With our partners with long experience and knowledge in the production of rotor and combing rollers for OE industry we are going to introduce our catalog of product for SCHLAFHORST open end machines.

We are always working to enlarge our product range therefore in you have any inquiry of product which cannot be found in this catalog, please don't hesitate to contact us. Most probably we can submit you a proposal anyway.

Please take note that in addition to the spare parts for Schlafhorst we are able to offer you component also for RIETER rotor spinning machine that you will find out in a separate catalogue.

■ OPENING ROLLER COMPLETE

TYPE	TOOTH SHAPE	FIBERS	SPEED RANGE rpm	CHARACTERISTICS
B-174 N B-174 DN		Cotton	6.000-8.000	Standard opening roller for cotton, intensive opening action, good fiber delivery, good wear resistance properties of the teeth
B-20 N B-20 DN		Rayon	6.000-8.000	Standard opening roller for cotton, intensive opening action, good fiber delivery, good wear resistance properties of the teeth
		Cotton Rayon	6.000-8.000	
S-21 N S-21 DN		Polyester/ Polyamide	6.000-8.500	Primarily for man-made fibers and their blends with cotton as well as linen. Also suitable for pure cotton with few trash and good average staple length
		Polyacrilic Rayon		
		Cotton blends	6.000-8.500	
		Pure cotton	6.000-8.500	

SPINNING ELEMENTS FOR SCHLAFHORST ROTORSPINNING

Opening rollers Baering

Machine Type	Bearing Code
SE 7	OEBCR304
SE 8	OEBCR307
SE 9 /SE 10	OEBCR310



Opening rollers complete

Type	SE 8 machine Code number	SE 9 machine Code number	SE 10/11 machine Code number
B 174- N	OS8174N	OS9174N	OS0174N
B 174 -DN	OS8174DN	OS9174DN	OS0174DN
B-20-N	OS8B20N	OS9B20N	OS0B20N
B-20-DN	OS8B20DN	OS9B20DN	OS0B20DN
B-21-N	OS8B21N	OS9B21N	OS0B21N
B-21-DN	OSB21DN	OS9B21DN	OS0B21DN

Opening roller wire ring type

Type	Code number
B 174- N	OSS174N
B 174 -DN	OSS174DN
B-20-N	OSSS20N
B-20-DN	OSSS20DN
B-21-N	OSSS21N
B-21-DN	OSSS21DN

Twin discs

Wheel Type	Machine Type	Code number
Wheel plane	SE 7	OETWSE7A
Wheel for reflector	SE 7	OETWSE7B
Wheel with reflector	SE 7	OETWSE7C
Wheel plane	SE 8	OETWSE8A
Wheel for reflector	SE 8	OETWSE8B
Wheel with reflector	SE 8	OETWSE8C
Wheel for reflector	SE 9 -SE 10 -SE11	OETWSE9A
Wheel with reflector	SE 9 -SE 10 -SE11	OETWSE9B
Reflector ring		OERR0010



Twin discs bearings

Bearing type	Code number
SE 7	OETB248
SE 8	OETB225
SE 9 - SE10 -SE11	OETB240

Twin discs mounted with bearing

Wheel Type	Machine Type	Code number
Plane	SE 7	OETSL11
With reflector	SE 7	OETSL11R
Plane	SE 8	OETSL22
With reflector	SE 8	OETSL22R
Plane	SE 9 -SE 10 -SE 11	OETSL33
With reflector	SE 9 -SE 10 -SE 11	OETSL33R

SPINNING ELEMENTS FOR SCHLAFHORST ROTORSPINNING

Rotors for SE 7 – SE 8

Diameter	Groove type	Max rpm	Total length	Schlafhorst no.	Code number
33 mm	G			117 037 050	OESF33GO
33 mm	T			117 037 077	OESF33TO
36 mm	G			117 038 645	OESF36GO
36 mm	T			117 037 079	OESF36TO
40 mm	S			117 037 073	OESF40SO
40 mm	G			117 038 649	OESF40GO
40 mm	U			117 037 087	OESF40UO
40 mm	T			117 037 718	OESF40TO
46 mm	S			117 037 075	OESF46SO
46 mm	G			117 038 653	OESF46GO
46 mm	U			117 036 632	OESF46UO
46 mm	T			117 037 083	OESF46TO



Rotors for SE 9-SE 10 –SE11

Diameter	Groove type	Max rpm	Total length	Schlafhorst no.	Code number
28 mm	G			117 038 803	OESR28GO
28 mm	K				OESR28KO
30 mm	G			117 038 601	OESR30GO
30 mm	K			117 036 916	OESR30KO
30 mm	T				OESR30TO
31 mm	G			117 038 959	OESR31GO
31 mm	T			117 036 972	OESR31TO
33 mm	G			117 038 605	OESR33GO
33 mm	T			117 036 888	OESR33TO
36 mm	S			117 038 803	OESR36SO
36 mm	G			117 038 671	OESR36GO
40 mm	U			117 037 038	OESR40UO
40 mm	G			117 038 609	OESR40GO
40 mm	S			117 037 032	OESR40SO
40 mm	T				OESR40TO
46 mm	G			117 038 611	OESR46GO
46 mm	U			117 037 040	OESR46UO
46 mm	S			117 036 903	OESR46SO
46 mm	T			117 037 241	OESR46TO
56 mm	T				OESR56TO

Groove profiles



All rotor can be available with Diamond coating - Boron diamond coating or Boron Nickel coating
 All rotor are with ceramic tip - Further rotors on request

SPINNING ELEMENTS FOR SCHLAFHORST ROTORSPINNING

Draw-off nozzles

The nozzles are crucial for yarn characteristic. The design of the navel has substantial influence also in the spinning stability.

Smooth navel is offering good yarn values and low Hairiness

Notches navels is giving better spinning stability in relation to the smooth one. More notches increase the hairiness.

Spiral is offering very good yarn properties with low hairiness. Lower spinning stability in confrontation to the Notches one.

Whirl insert can be offered in addition for increasing of the hairiness and the yarn becomes bulky.



SMOOTH

4 NOTCHES

6 NOTCHES

8 NOTCHES

SPIRAL



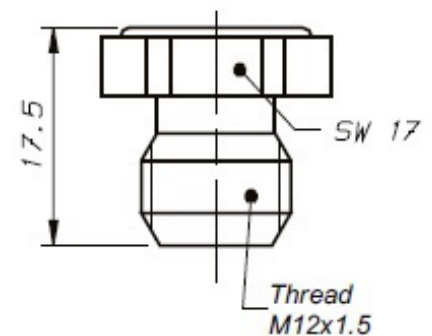
SE7 - SE8 - SE9 (for srewing)

Type

KN
KN4
KN6
KN8
KS

Code number

OES15KN0
OES15KN4
OES15KN6
OES15KN8
OES15KS



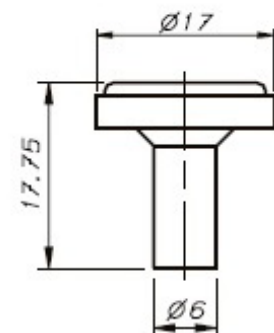
SE10 - SE11 (magnetic)

Type

KN
KN4
KN6
KN8
KS

Code number

OES20KN
OES20KN4
OES20KN6
OES20KN8
OES20KS



Other type available on request.



RiMax Technology Srl

Piazza Garibaldi 7 - 21013 GALLARATE (VA) SEDE OPERATIVA: Via Fratelli di Dio 1 - 21052 BUSTO ARSIZIO (VA)
Tel +39 0331 1547396 · Fax +39 0331 1812358
e-mail: info@rimaxtechnology.com

www.rimaxtechnology.com