



ACCESSORIES & SPARE PARTS

FOR TEXTILE MACHINES

CATALOGUE

APRIL 2013



The information in this leaflet are generally correct, however,
it is not possible to lay claim to liability or guarantee.
We reserve the right to make changes which serve the technical progress.

ABOUT US

RiMax Technology is a young, dynamic company, offering high quality components and spare parts for the textile market. Our company is working with textile technicians who already have many years experience solving customer problems and who can therefore recommend the best components to solve your problems in the main textile sectors of synthetic fibre spinning, drawtexturing, twisting and other processes before weaving. We offer a large range of quality spare parts and components for all the main makes of textile machines and most particularly, ceramic guides, bearings, roller guides, twist stops, separator rolls, guide discs and friction discs, yarn detectors and sensors, yarn cutters, drive belts etc.



www.rimaxtechnology.com

INDEX

- 05 CERAMIC THREAD GUIDES
- 15 TAKE UP WINDER GUIDES
- 19 ROLLER GUIDE
- 20 SEPARATOR ROLLER
- 22 SUPPORTING ROLLERS
- 23 NIP ROLLERS – TOP ROLLERS
- 25 AIR JET
- 29 TWIST STOP
- 30 SPARE PARTS FOR TEXTURIZING MACHINES
- 34 OE SPARE PARTS

CERAMIC THREAD GUIDES

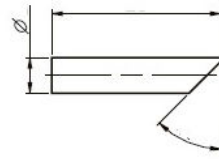


TECHNICAL PHARAMETERS

Material	Unit	Alumina 95 %	Alumina 99 %	Alumina 99,7 %	TiO2 conductive	TiO2 95 %	Zirconia Y	ZTA
Color		white - pink	white -pink	white - pink	back	creme	white	ivory
Density	g/cm3	3,65	3,9	> 3,90	4,1	4,1	6	3,9
Flexural Strenght	Mpa	300	380	380	70	70	900	450
Compressive Streght	Mpa	2500	3600	3800	3000	3000	3500	4500
Vichers Hardness	HV(0,5)	1800	1800-2.000	1.800-2.300	900	1200	1300	1600
Thremal Expansion coefficient	10-6/°C (20-1.000° C)	7,5	7,5	9	8,5	8,5	11	8,1
Thremal Conductivity	W/mK	24	27	30	25	25	2,6	23
Open porosity	%	0	0	0	0	0	0	0

CERAMIC THREAD GUIDES / RODS

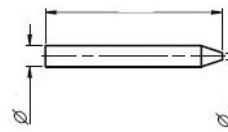
Dimension: at request



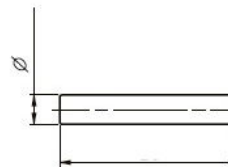
Dimension: at request



Dimension: at request



Dimension: at request



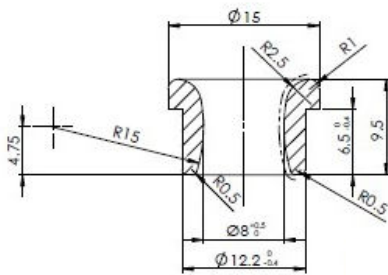
CERAMIC THREAD GUIDES / TUBES

Diameter A and B, length L on request

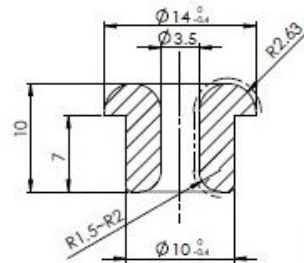


CERAMIC THREAD GUIDES / EYELETS

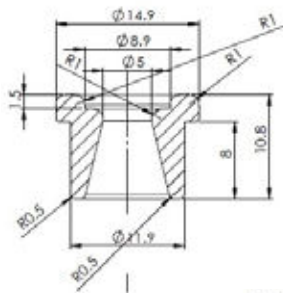
FRC26A74



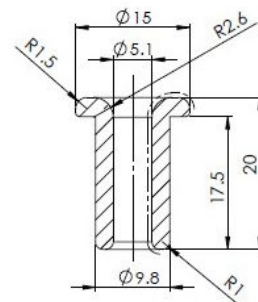
FRC01350



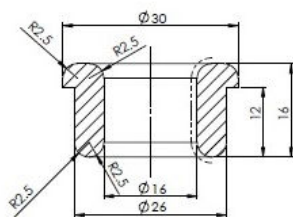
FRC02620



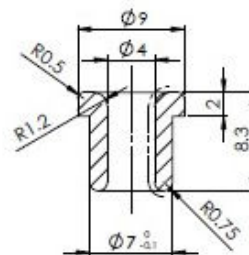
FRC10490



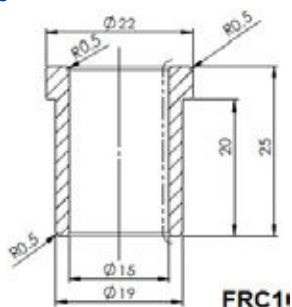
FRC10611



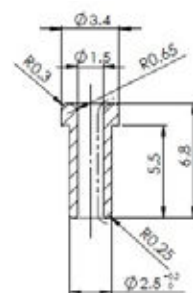
FRC10968



FRC10735

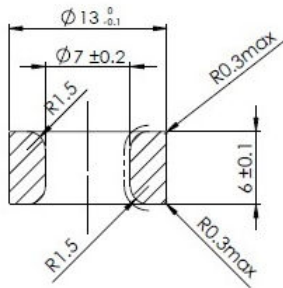


FRC02120

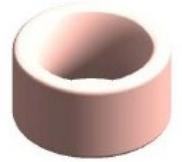
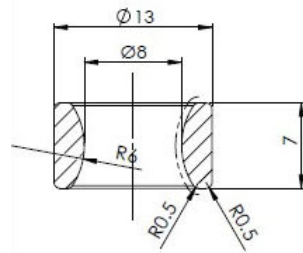


CERAMIC THREAD GUIDES / EYELETS

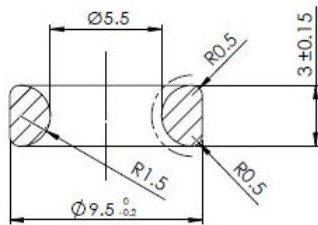
FRC26A64



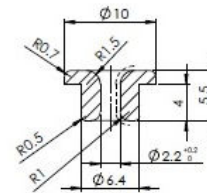
FRC26A69



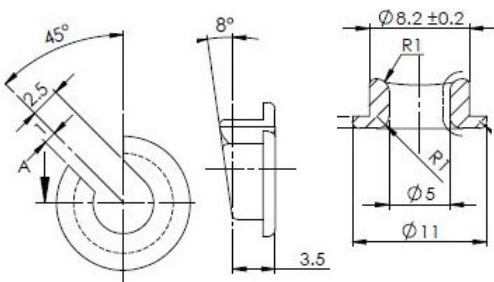
FRC26A72



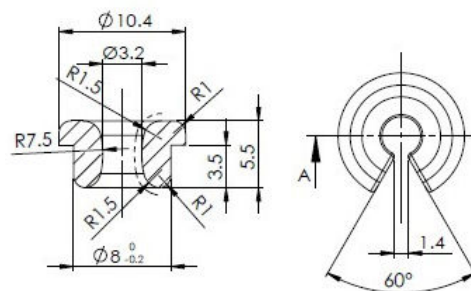
FRC02800



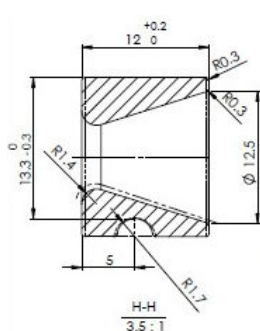
FRC01520



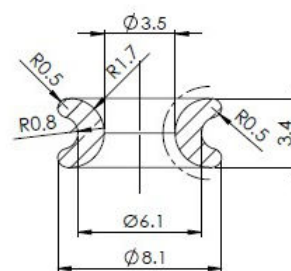
FRC01160



FRC29212

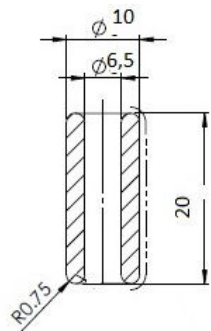


FRCBX201

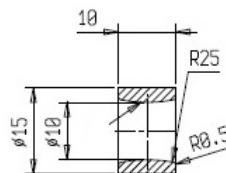


CERAMIC THREAD GUIDES / OTHERS PART

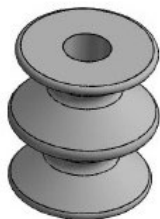
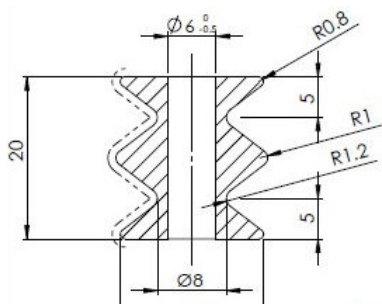
FRC10652



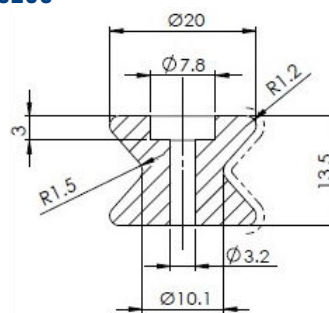
FRC21220



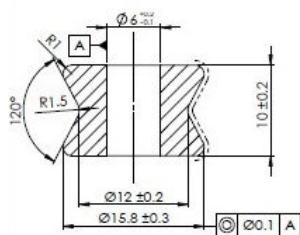
FRC01170



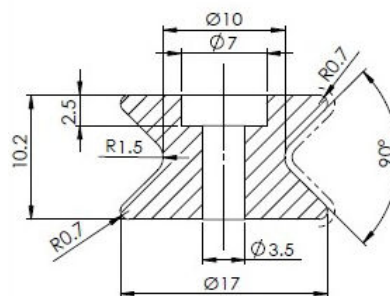
FRC00230



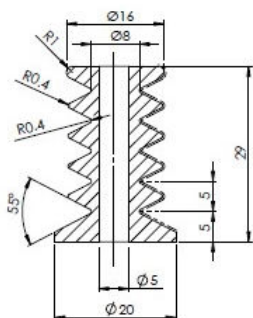
FRC14799



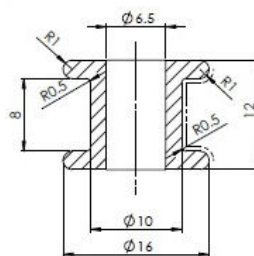
FRC05010



FRC14478

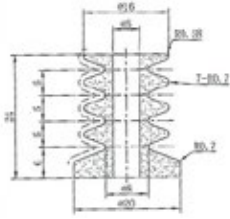


FRC1280V

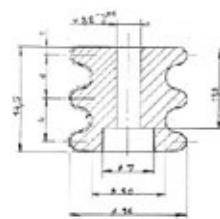


CERAMIC THREAD GUIDES / OTHERS PART

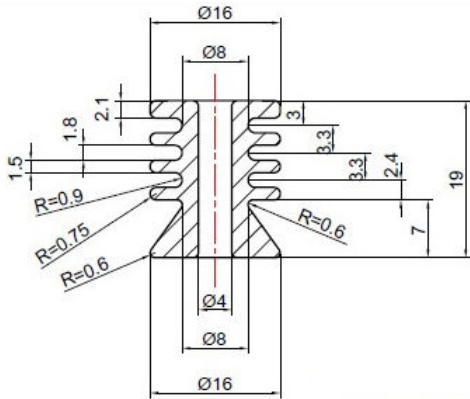
FRC14391



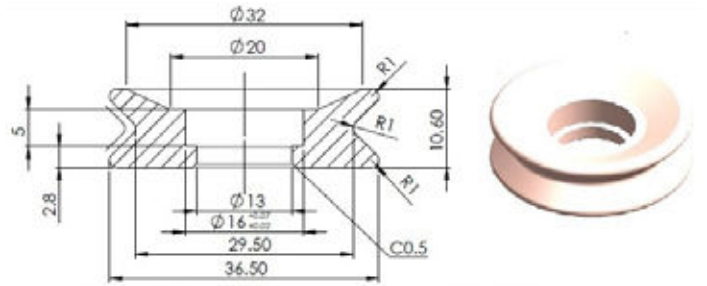
FRC9036Z



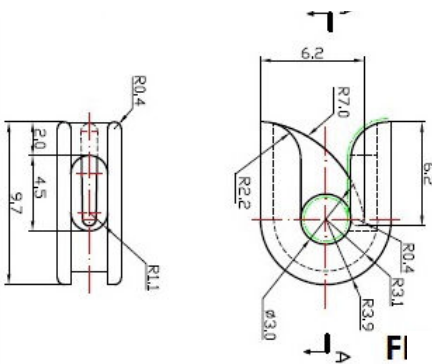
FRC02860



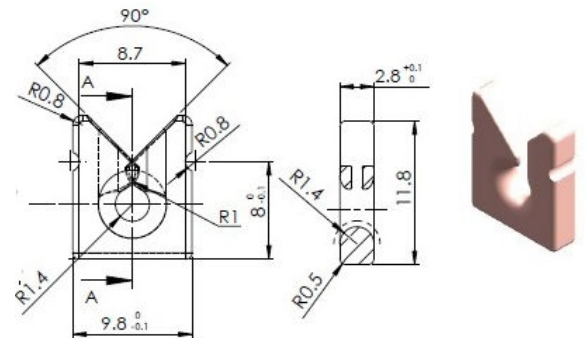
FRC12599 with Bearing 625ZZ



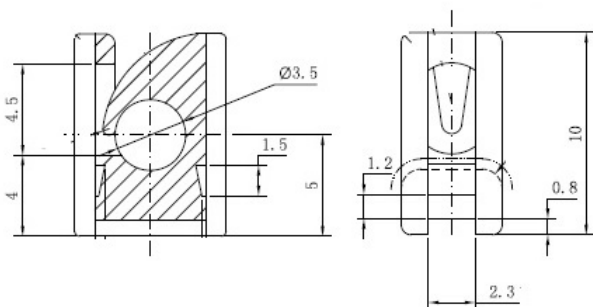
FRC00060



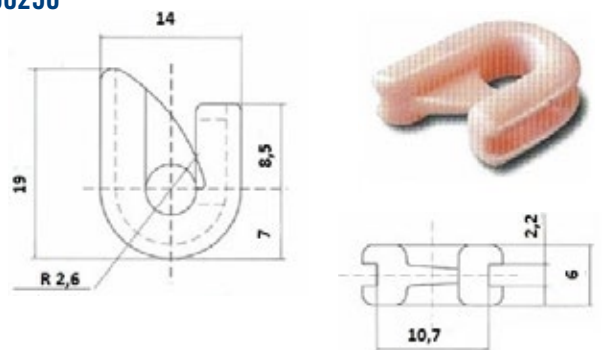
FRC02250



FRC25100

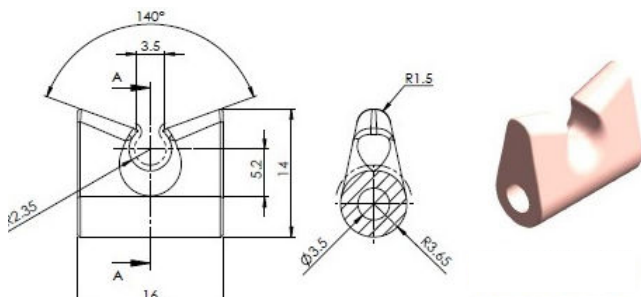


FRC00250

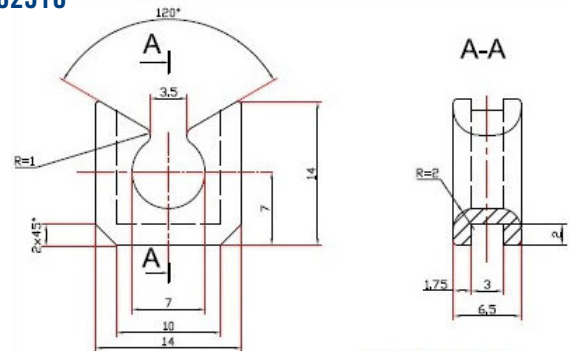


CERAMIC THREAD GUIDES / OTHERS PART

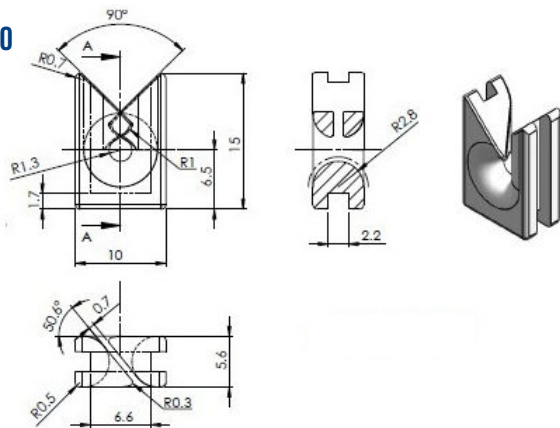
FRC02520



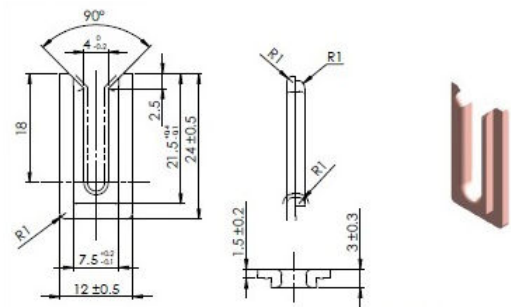
FRC02510



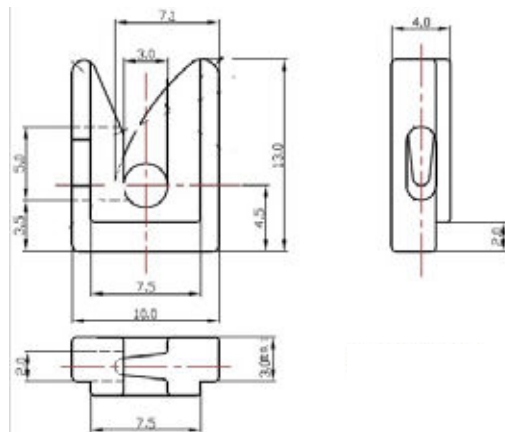
FRC02740



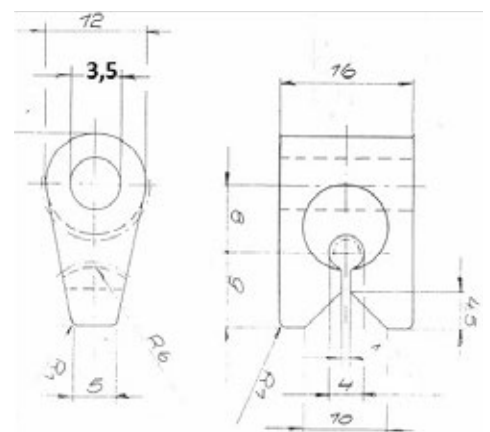
FRC02750



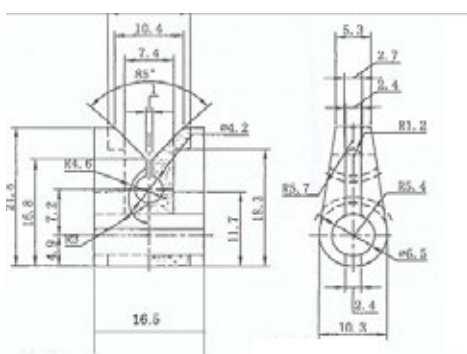
FRC02980



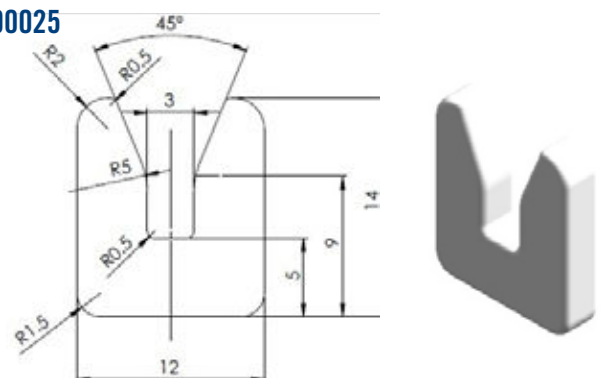
FRC25835



FRC01530

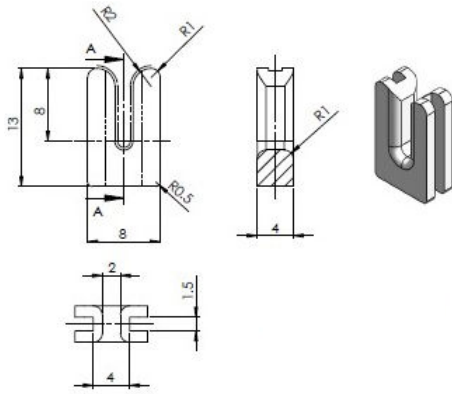


FRC00025

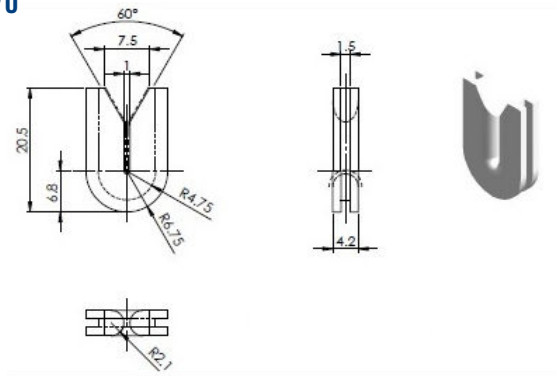


CERAMIC THREAD GUIDES / OTHERS PART

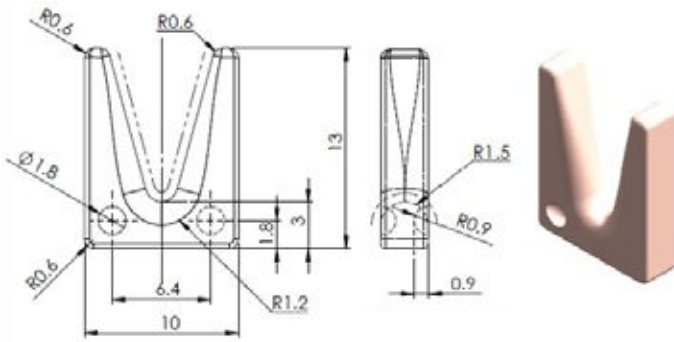
FRC02070



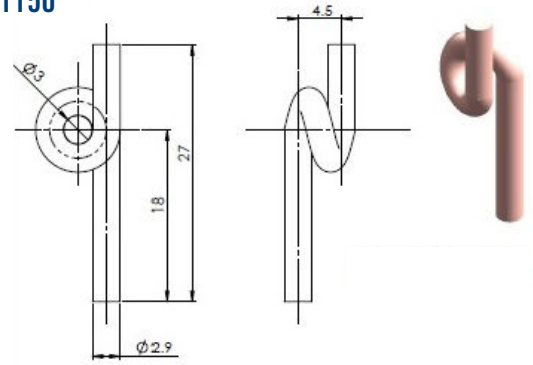
FRC01670



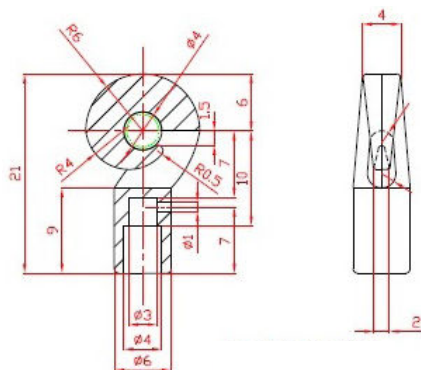
FRC00010



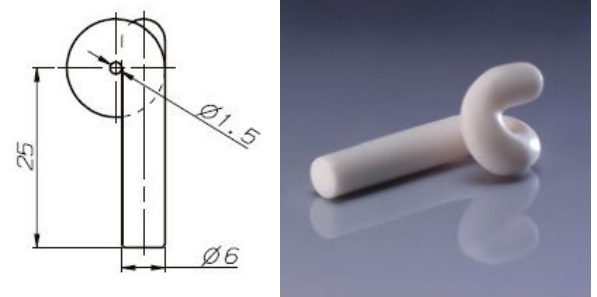
FRC01150



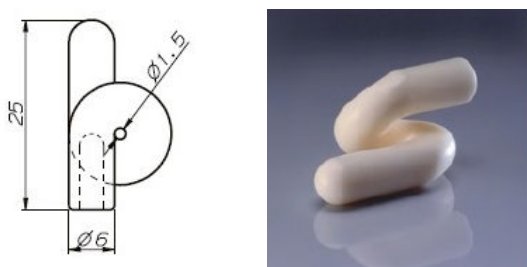
FRC70012



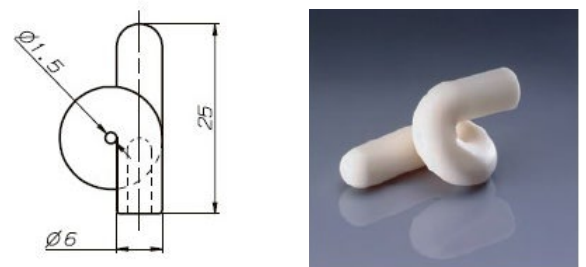
FR017500



FRC02920

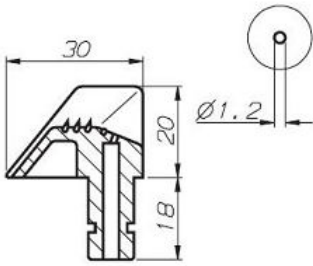


FRC76082

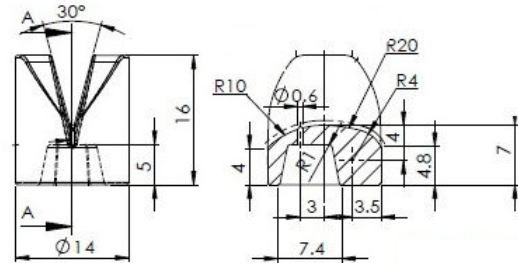


CERAMIC THREAD GUIDES / OTHERS PART

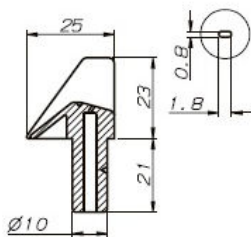
FR025100



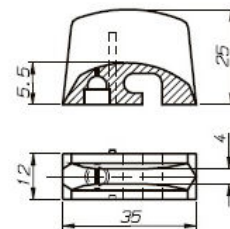
FRC288WN



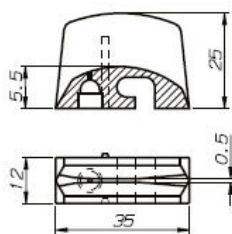
FR029900



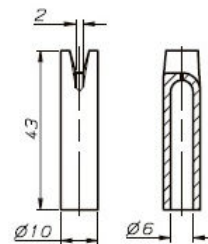
FR004100



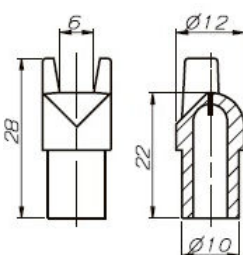
FR003300



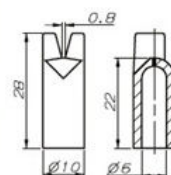
FR006300



FR000700

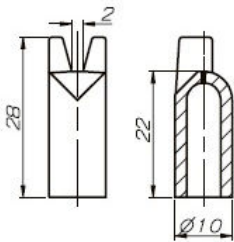


FR942520

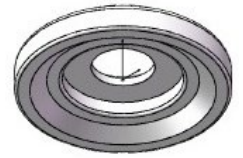
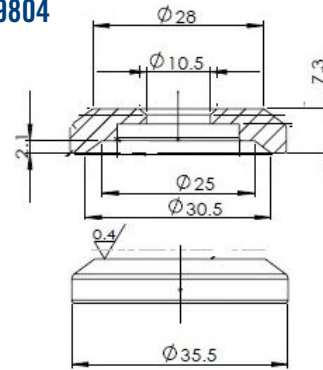


CERAMIC THREAD GUIDES / OTHERS PART

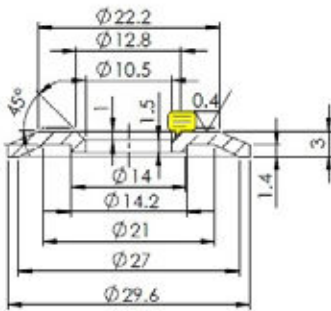
FRC011400



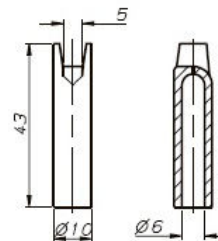
FRC99804



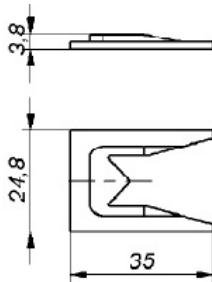
FRC05599



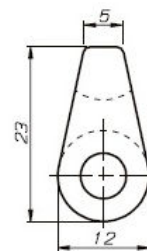
FR027500



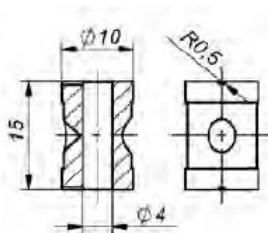
FR94808G



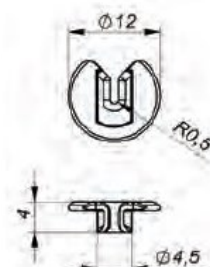
FR90258P



FRC02910



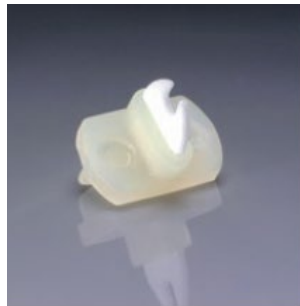
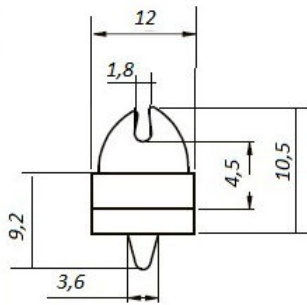
FRC02080



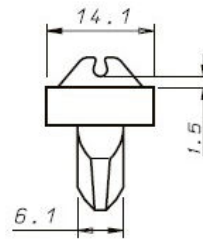
TAKE UP WINDER GUIDES



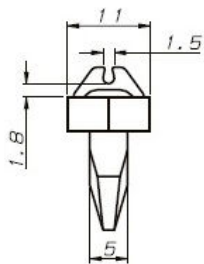
FR403823



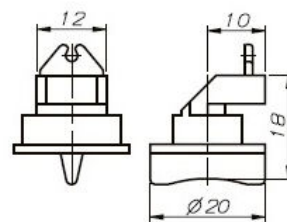
FR005600



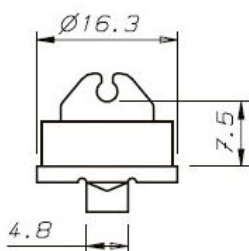
FR032700



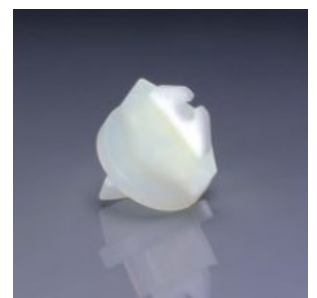
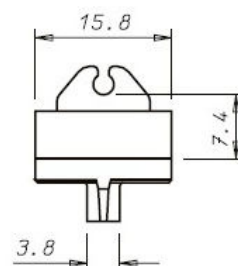
FR94601R



FR006900

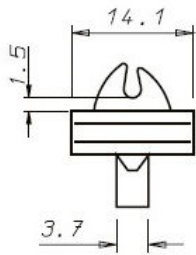


FR006800

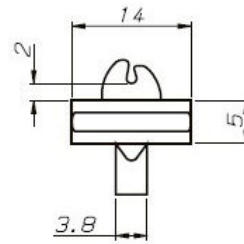


TAKE UP WINDER GUIDES

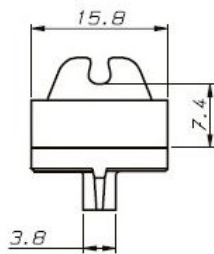
FR006700



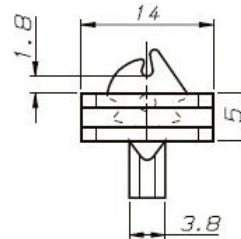
FR020600



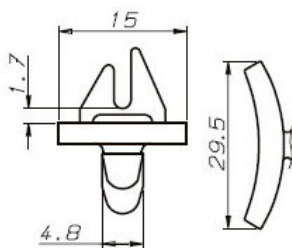
FR008000



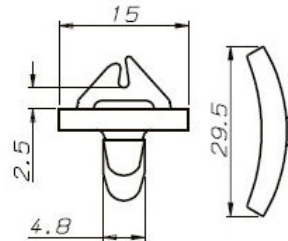
FR011600



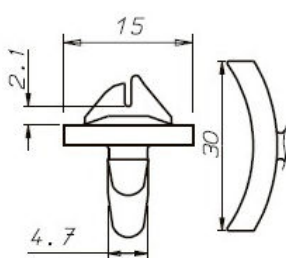
FR017800



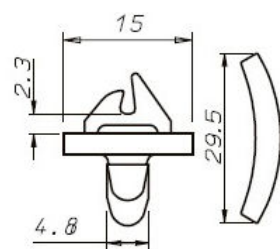
FR011600



FR008100

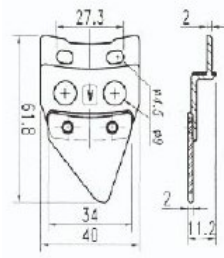


FR012000

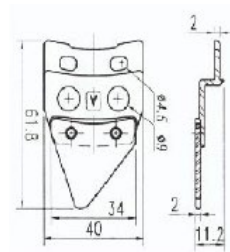




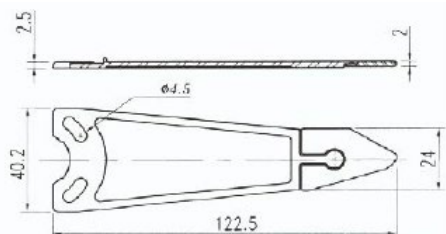
FH76457A



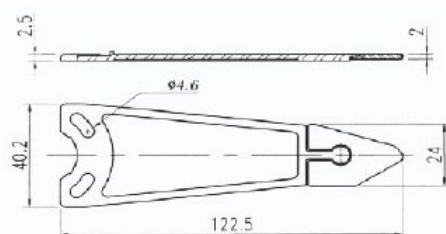
FH76457B



FH76461



FH76462



TAKE UP WINDER GUIDES

FRTY001A



FRTY001B



FRTY001C



FRTY002A



FRTY002B



FRTY002C



FRC01180



FRC01190



BLADE



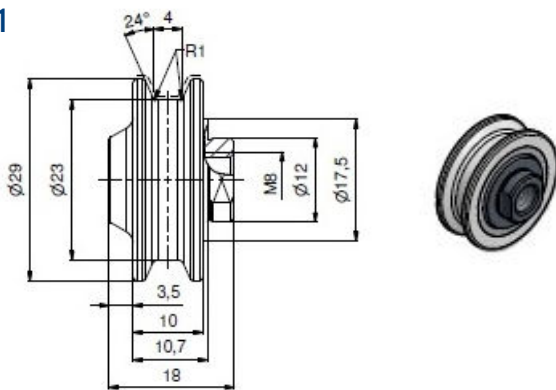
FRC30100



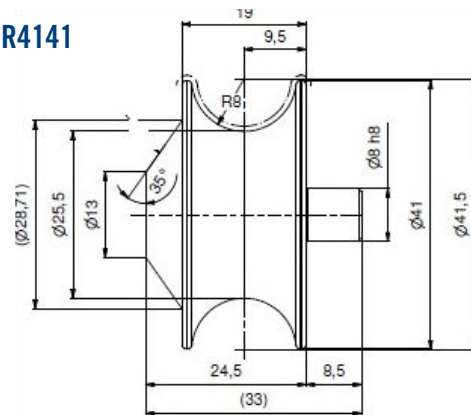
ROLLER GUIDES



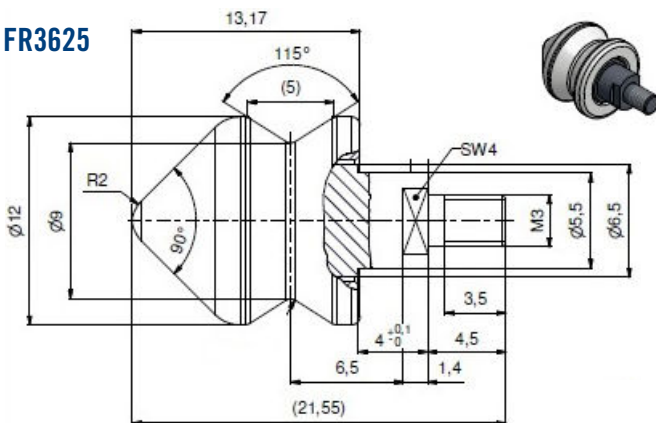
FR1891



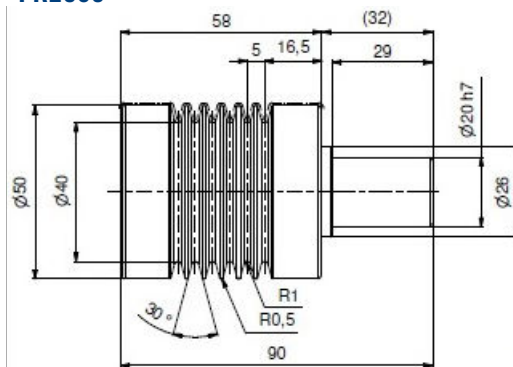
FR4141



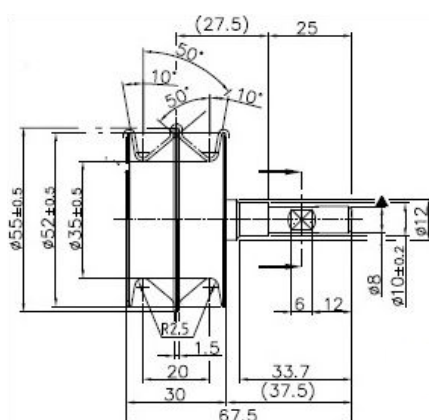
FR3625



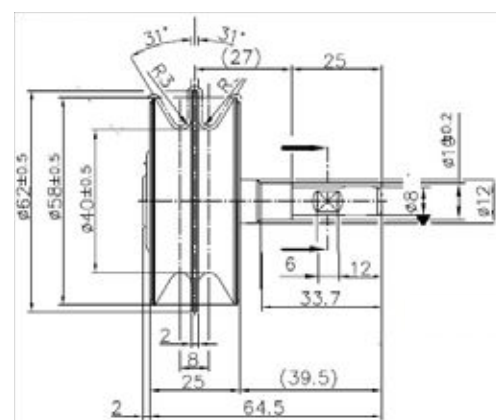
FR2683



FR3981

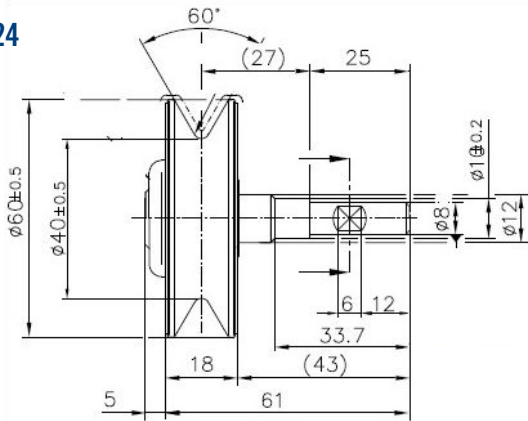


FR2625

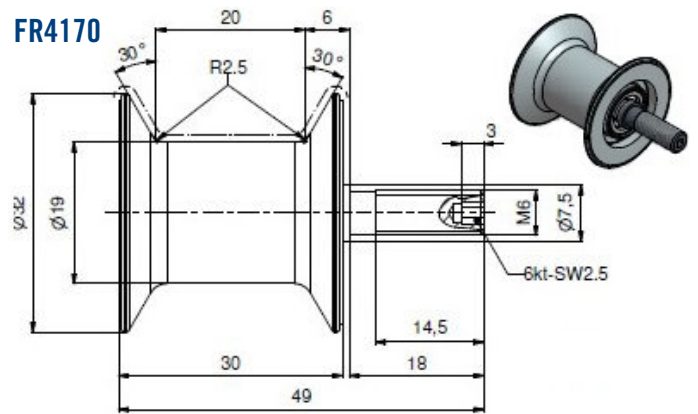


ROLLER GUIDES

FR2624

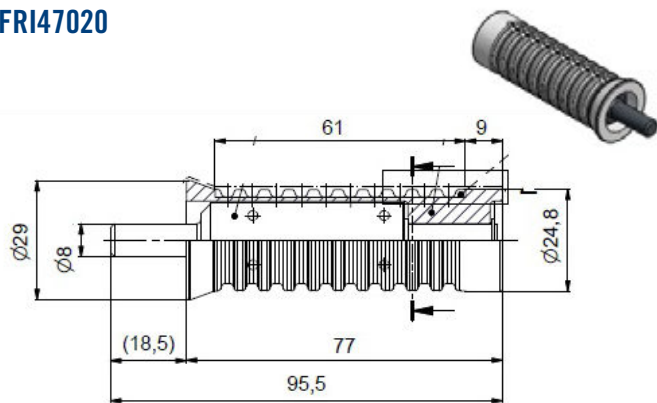


FR4170

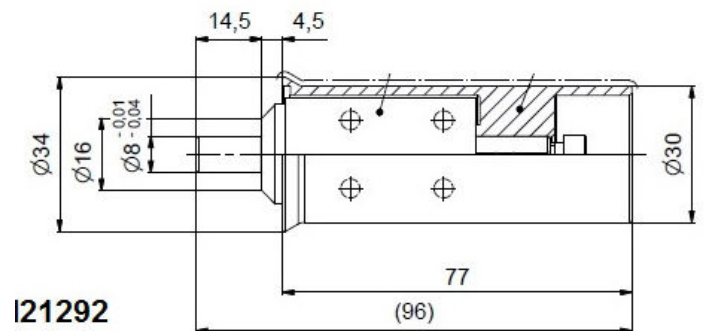


SEPARATOR ROLLERS

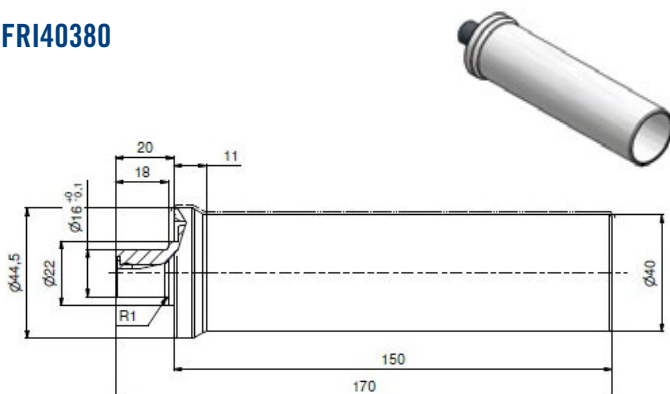
FRI47020



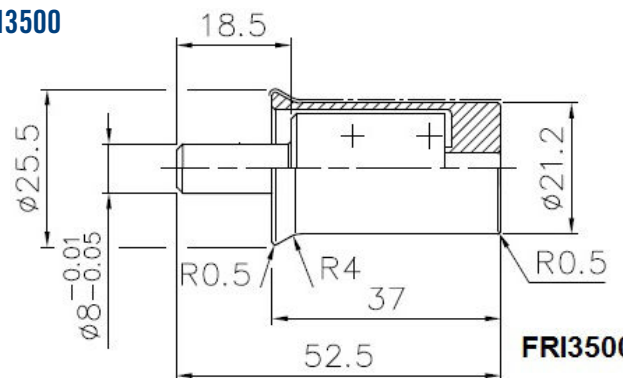
FRI21292



FRI40380

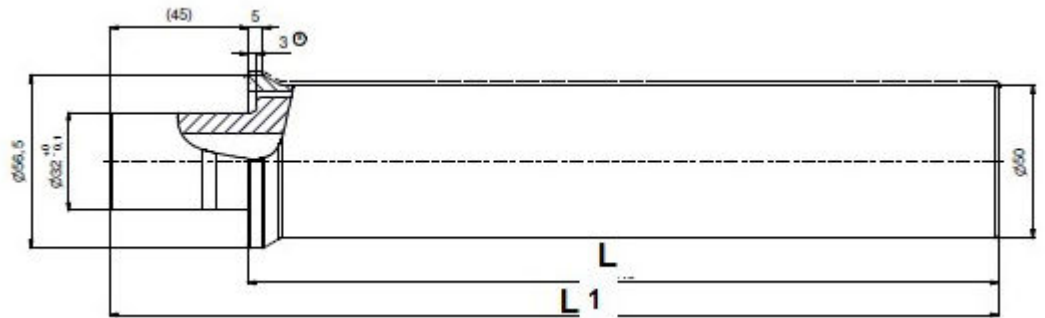


FRI3500

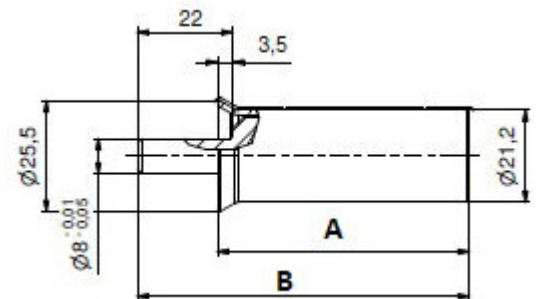


SEPARATOR ROLLERS

FRI3693A L = 245
 FRI3693B L = 210
 FRI3693C L = 150

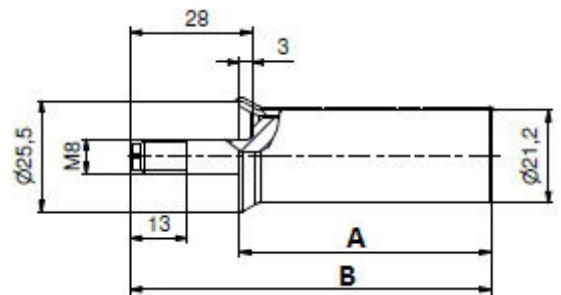


Code	Lenght A	Lenght B
FRI3520A	47	63
FRI3530A	58	76,5
FRI3540A	77	96
FRI3550A	98	117
FRI3560A	110	129
FRI3570A	120	139



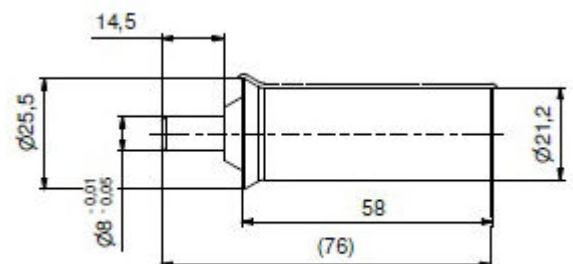
All the type are available with grease up to 70° or up to 140° C
 All the type are available with hard Cromium or ceramic coating

Code	Lenght A	Lenght B
FRI3531A	58	83
FRI3541A	77	103
FRI3551A	98	124
FRI3561A	110	136
FRI3571A	120	147



All the type are available with grease up to 70° or up to 140° C
 All the type are available with hard Cromium or ceramic coating

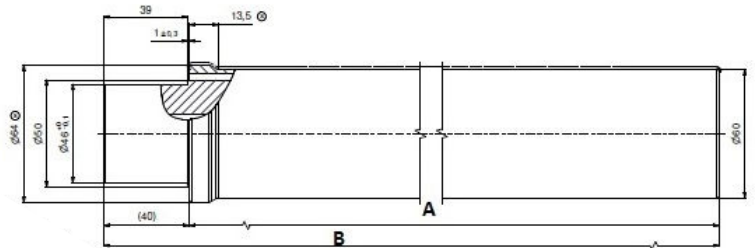
Code	Lenght A	Lenght B
FRI3522A	47	63
FRI3532A	58	76,5
FRI3542A	77	96
FRI3552A	98	117
FRI3562A	110	129
FRI3572A	120	139



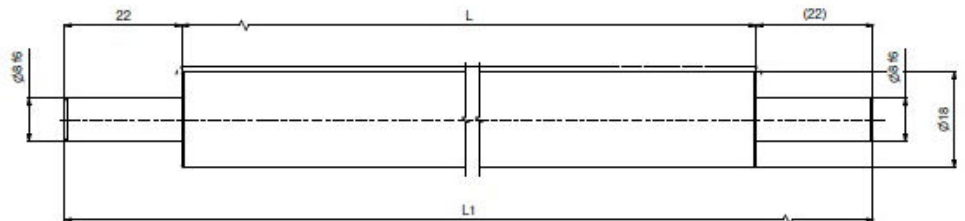
All the type are available with grease up to 70° or up to 140° C
 All the type are available with hard Cromium or ceramic coating

SUPPORTING ROLLERS

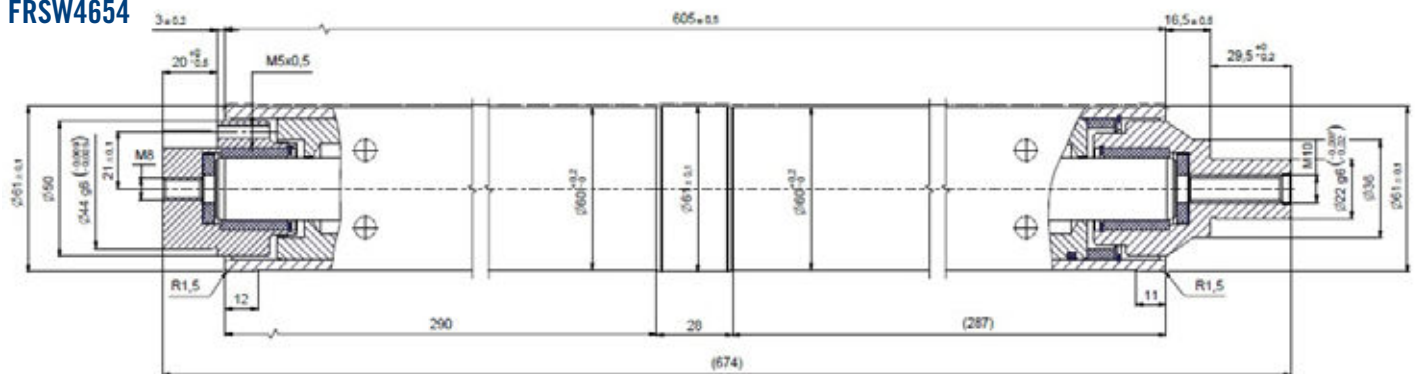
Code	Lenght A	Lenght B	Surface
FRI3913A	320	360	Hard Chromium
FRI39131	320	360	Ceramic coating
FRI3694A	240	280	Hard Chromium
FRI3694A	240	280	Ceramic coating



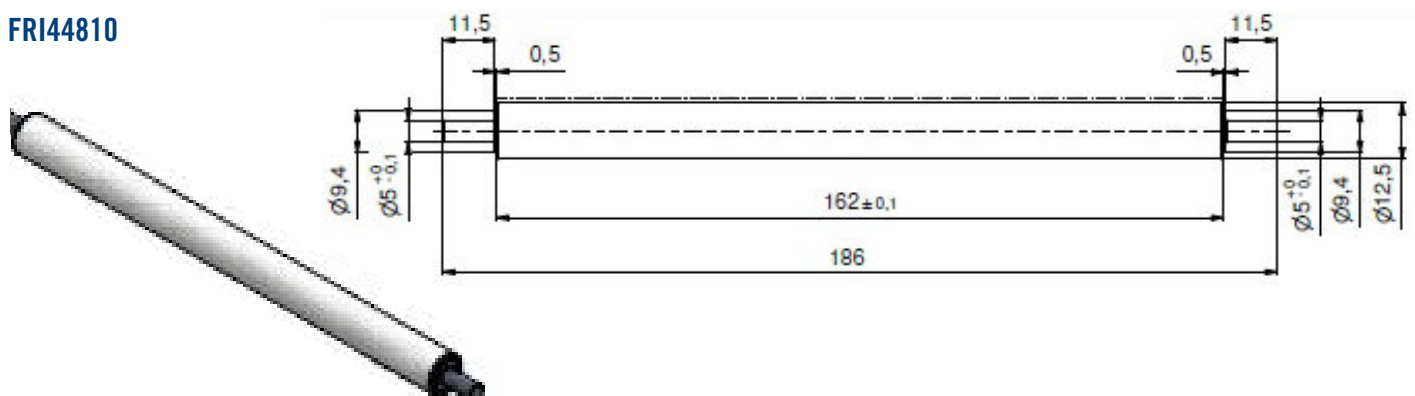
Code	Lenght
FRI4021A	300
FRI4021B	260
FRI4021C	200



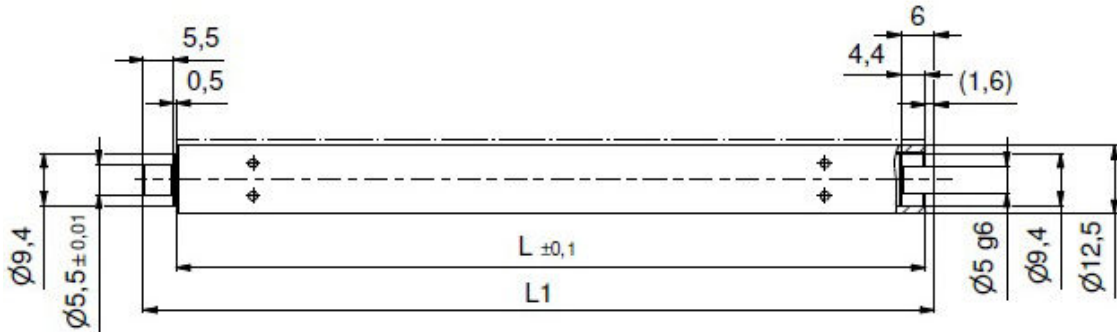
FRSW4654



FRI44810

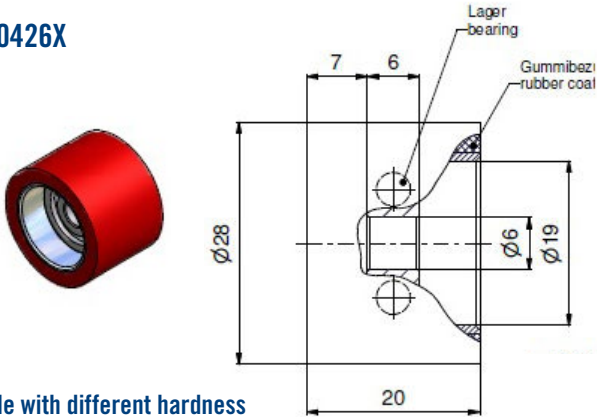


Code	Length
FRI4454A	112
FRI4454B	137
FRI4454C	162



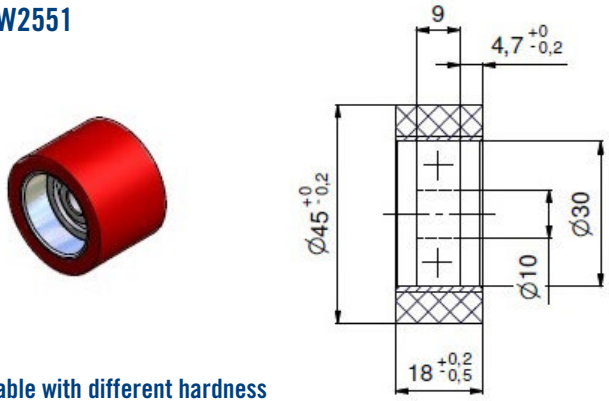
NIP ROLLERS - TOP ROLLERS

FRW0426X



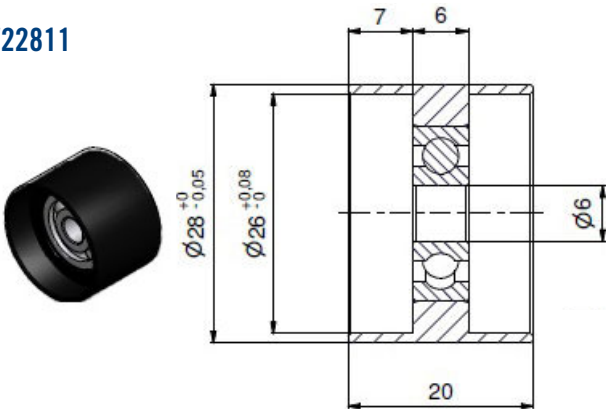
Available with different hardness

FRW2551

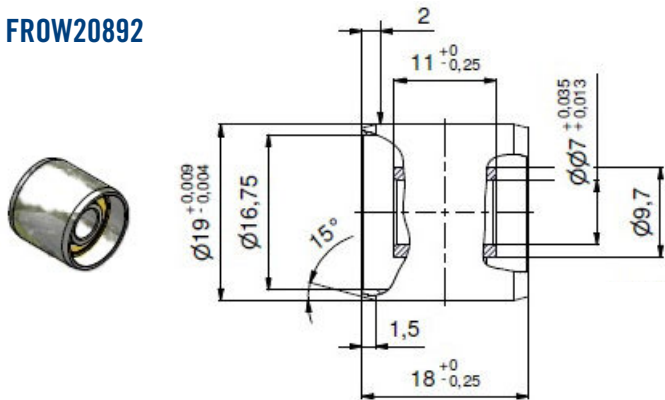


Available with different hardness

FRW22811

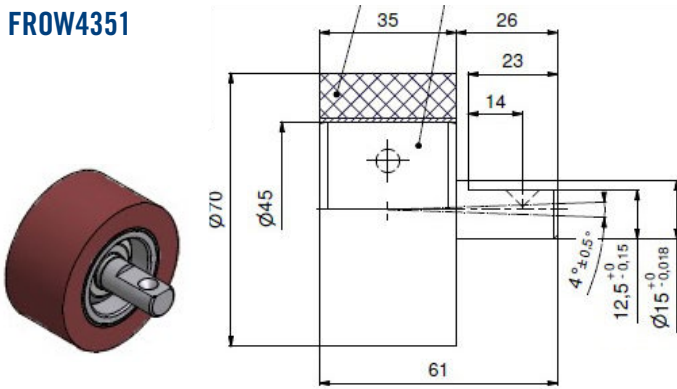


FRW20892

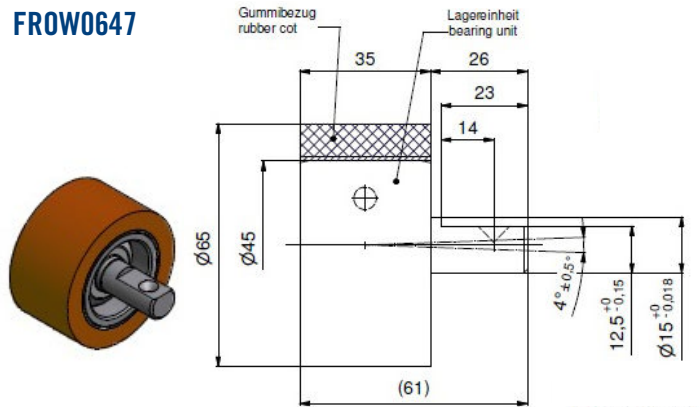


NIP ROLLERS - TIP ROLLERS

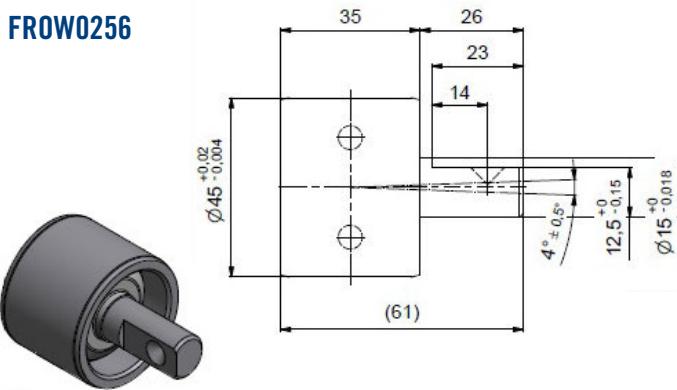
FROW4351



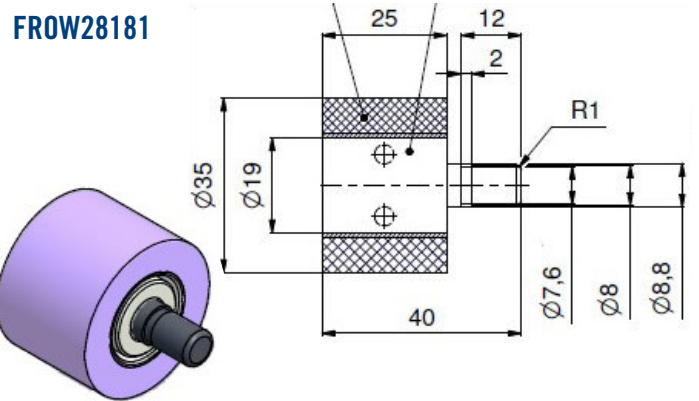
FROW0647



FROW0256



FROW28181



Rubber coats for textile machines:
available in different dimension and hardness



SPI- Interlacing Jets for FDY and IDY spinning processes of industrial heavy denier yarns

The **SPI Interlacing Jets** have been developed for interlacing of FDY and IDY heavy denier industrial yarns. The SPI technology is also used in BCF spinning processes for migration and pre-interlacing application.



A-type



B-type

Jet Type	Titer Range [dtex]	Yarn End Separation	Air Consumption per Jet Insert [Nm ³ /h]
SPI-20-29	200 - 400	min 7,0	1,86 * (p + 1)
SPI-23-33	300 - 900	min 7,5	2,46 * (p + 1)
SPI-30-42	500 - 1200	min 7,5	4,19 * (p + 1)
SPI-35-50	700 - 1800	min 9,0	5,70 * (p + 1)
SPI-40-58	1000 - 3200	min 12,0	7,44 * (p + 1)
SPI-45-67	1800 - 4800	min 12,0	9,42 * (p + 1)
SPI-55-67	2600 - 6000	min 12,0	14,07 * (p + 1)
SPI-65-85	4800 - 12000	min 12,0	19,65 * (p + 1)

p = air pressure in bar

Examples of SPI - Interlacing Jets, multi - threads



SPI Interlacing Jet, 2-threadline



SPI Interlacing Jet, 6-threadline

SPF- Interlacing Jets for POY and FDY spinning processes of fine synthetic textiles

The **SPF Interlacing Jets** are made for textile and technical yarns and used for main-interlacing as well as pre-interlacing likewise in POY- and FDY-spinning processes of fine deniers up to ~ 600 dtex.



SPF Interlacing Jet - single standard



standard

The **SPF-Y-Type** is a further development of the successful SPF standard jet and shows an excellent interlacing performance even on different yarn deniers with low filament counts.



SPF Interlacing Jet - single Y-type



Y-type

Jet Type (standard)	Jet Type (Y-type)	Titer Range for FDY (dtex) up to	Titer Range for POY (dtex) up to	Yarn End Separation	Air Consumption per Jet Insert [Nm ³ /h]
SPF-11-15	SPF-11-14Y	~ 70	~ 290	min 3,5	0,56 * (p + 1)
SPF-13-17	SPF-13-17Y	~ 150	~ 450	min 3,5	0,79 * (p + 1)
SPF-16-20	SPF-16-20Y	~ 330	~ 600	min 3,5	1,19 * (p + 1)
SPF-20-29		~ 660		min 5,0	1,86 * (p + 1)

p = air pressure in bar

Examples of SPF - Interlacing Jets, multi - threads



SPF Interlacing Twin Jet, 6mm yarn end separation



SPF Interlacing Jet, 2-threadline



SPF Interlacing Jet, 4-threadline

BCF Interlacing Jets for carpet yarns

The BCF Interlacing Jets are used for carpet yarns in BCF spinning processes. The designs are changeable to satisfy customer requirements according to yarn path, machine adaptation and air supply. The jets are available in single or tandem version, with or without integrated air stop.



BCF Interlacing Jet (Single),
2-thread line



BCF Interlacing Jet (Tandem),
2-thread line



BCF Interlacing Jet (Single),
4-thread line

BCF Jet Inserts

RPE offers the whole range of BCF jet inserts to meet all requirements of interlacing performance. All our BCF jet inserts are available in 20mm as well as 16mm yarn end separation.



IN.B4250C, 20mm



BS04, 16mm



Blind insert
with guiding channel



B4860C, 20mm



Blind insert

Jet Type BXX	Jet Type BXXXXC	Titer Range (dtex) up to	Air Consumption per Jet Insert [Nm ³ /h]
B01	-	~ 800	2,68*(p+1,013)
B02	B3035C	~ 1200	4,05*(p+1,013)
B03	B3542C	~ 1800	5,70*(p+1,013)
B04	B4250C	~ 2800	8,01*(p+1,013)
B05	B4860C	~ 4200	10,72*(p+1,013)
-	B5570C	~ 5800	14,07*(p+1,013)
B06/2	-	~ 6500	17,88*(p+1,013)

p = air pressure in bar

Oil Intermingling Units for spinning processes

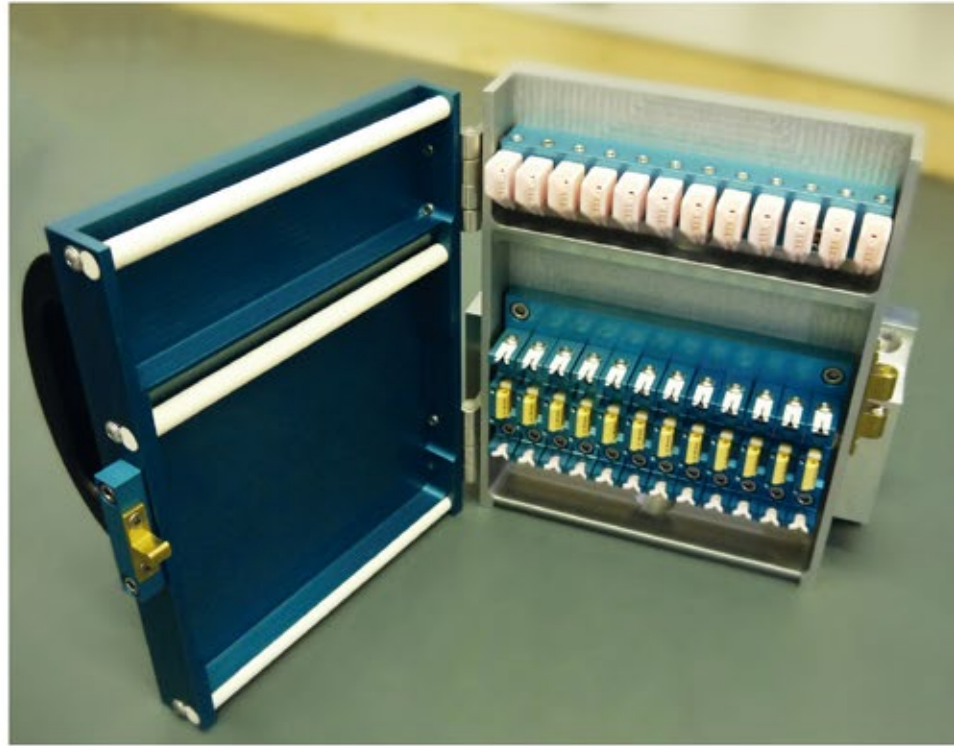
RPE has developed a new system for the application of spin-finish and inter-mingling in spinning processes.

The system includes the applicator guides and the pre-interlacing jets in one compact unit but separated from each other.

The pre-interlacing jets are used to achieve an even distribution of the spin finish through the filaments, a better spacing between the thread lines as well as a remarkable reduction of filament breaks during the process.

The main advantage compared to conventional systems is the separation of the spin-finish device and the pre-intermingling device as well as the possibility of an accurate and fixed yarn path.

Sizes of applicator guides and pre-interlacing jets can be used independently from each other according to the specific requirements.



12-thread line Oil Intermingling Unit with SPF- Interlacing Jets for a FDY Spinning Process



6-thread line Oil Intermingling Unit with SPI- Interlacing Jets for a Tri-Color-BCF Spinning Process



1-thread line Oil Intermingling Unit with SPF- Interlacing Jet for a POY Spinning Process

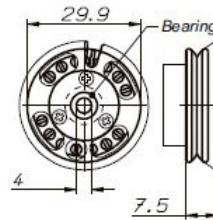
TWIST STOP



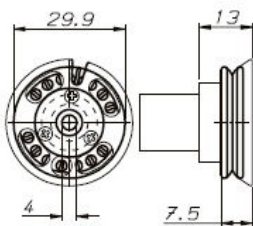
FRTW30DD



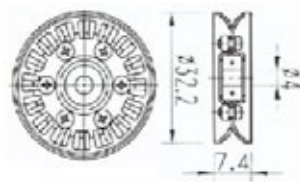
FRTW3001



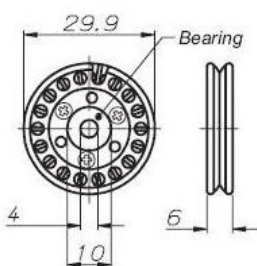
FRTW3002



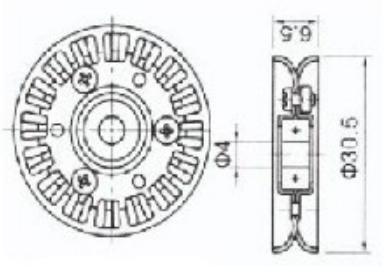
FENPS032



FR671896



FRC01270



SPARE PARTS FOR TEXTURIZING MACHINES



CERAMIC FRICTION DISCS

Dimension dia. x hole x h	profile/roughnes
45 x 12 x 6	Round or flat from Ra 0,85 to 1,30
49,62 x 12 x 6	
50 x 12 x 6	
52 x 12 x 9	
52 x 14,45 x 9	

CERAMIC GUIDE DISCS

Dimension dia. x hole x h	Profile/Roughnes
45 x 12 x 6	Round or flat Ra 0,10 (bright) Ra 0,30 (matt)
49,62 x 12 x 6	
50 x 12 x 6	
52 x 12 x 9	
52 x 14,45 x 9	

PU DISCS

Dimension dia. x hole x h	Hardness Shore
45 x 12 x 6	87 ° or 92 °
49,60 x 12 x 6	
50 x 12 x 6	
52 x 12 x 9	
52 x 14,45 x 9	
58 x 14,45 x 9	

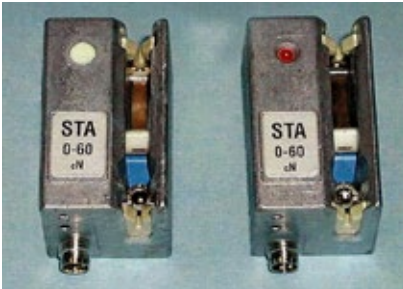
ALUMINIUM GUIDE DISCS

Dimension dia. x hole x h	profile / treatment
45 x 12 x 6	C profile / hard Chromium
49,60 x 12 x 6	C profile / hard Chromium
50 x 12 x 6	C profile / hard Chromium
52 x 12 x 9	C profile / hard Chromium
52 x 14,45 x 9	C profile / hard Chromium
52 x 14,45 x 9	C profile / nano ceramic
58 x 14,45 x 9	C profile / hard Chromium
49 x 12 x 9	knife discs / nano ceramic
49 x 14,45 x 9	knife discs / nano ceramic

Other dimension are available
for the main texturizing machines on the market.

TEXTURIZING MACHINE SPARE PARTS

YARN TENSION SENSOR



Available with tension range 0 -30 cN, 0 -60 cN, 0 – 120 cN

YARN CUTTER AND YARN BRAKE DETECTORS



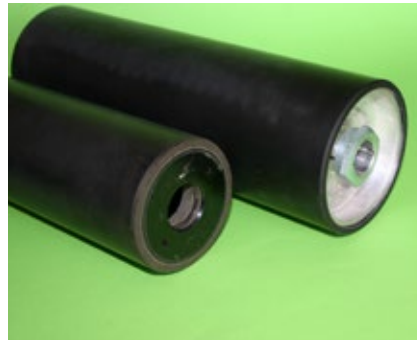
Yarn cutter in different shape are available

Yarn detector sensors PNP or NPN output available

DRIVING BELT



TAKE UP ROLLERS



Different dimension and diameter available

To cover the different textile machines on the market

Driving belts for friction texturizing unit available on the market

COMPLETE ASSORTMENT OF TAKE UP WINDER GUIDE FOR TEXTURIZING MACHINE

PLASTIC AND RUBBER PARTS

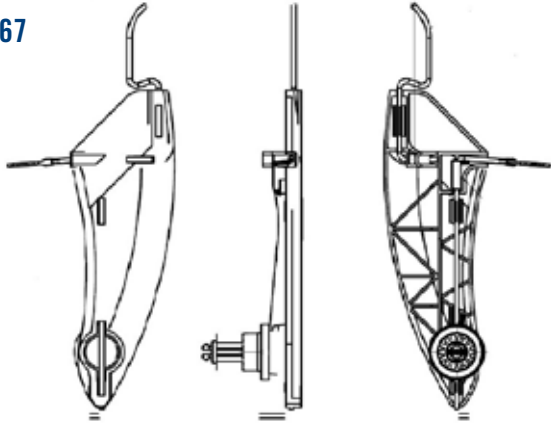


ICBT RIETER spare parts

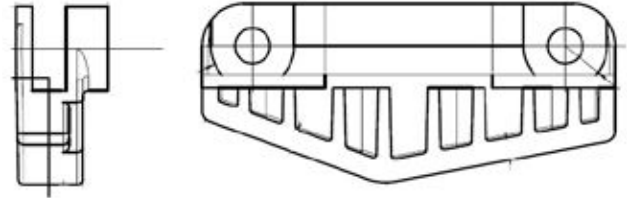


TEXTURIZING MACHINE SPARE PARTS

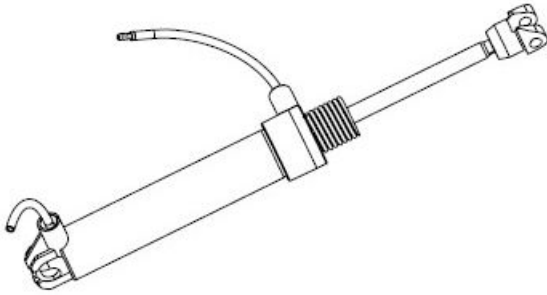
10153267



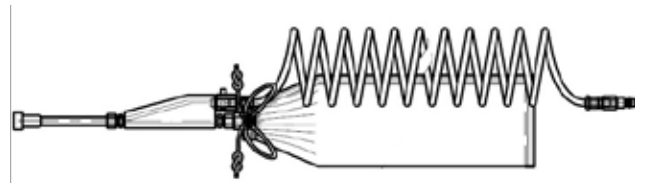
10160623



10166050



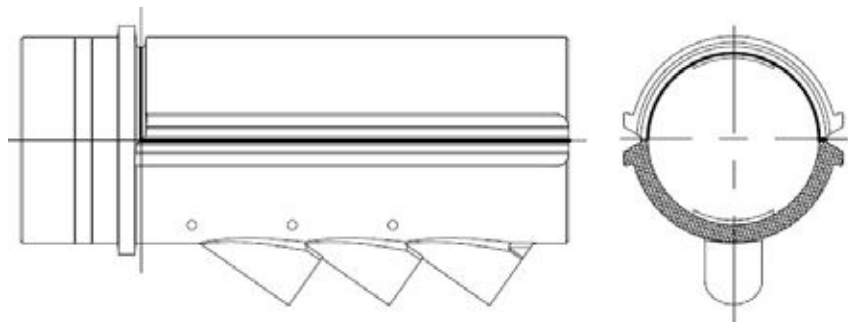
10166903



FT4500212B

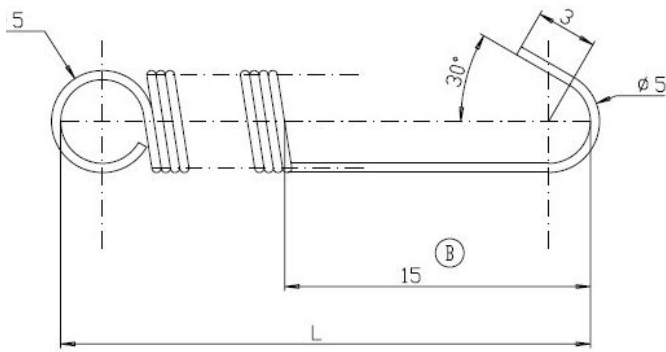


FT4800105A

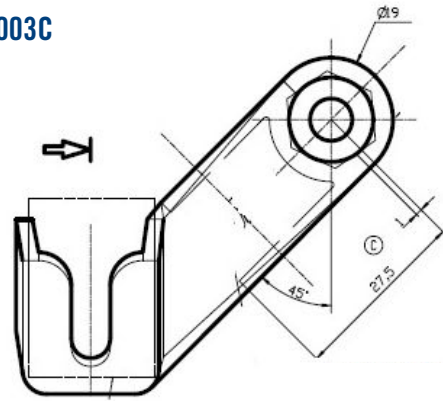


TEXTURIZING MACHINE SPARE PARTS

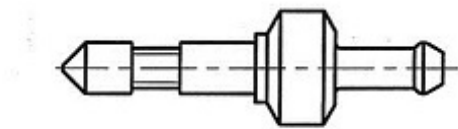
FT4500027C



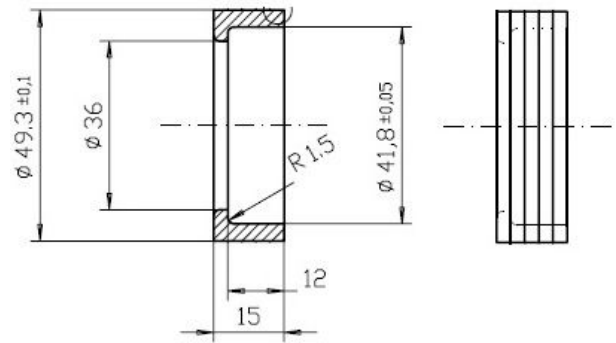
FT4600003C



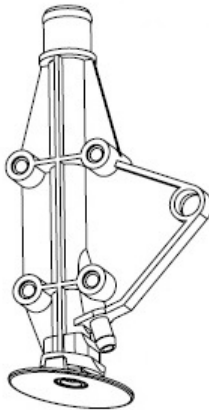
FT4400016B



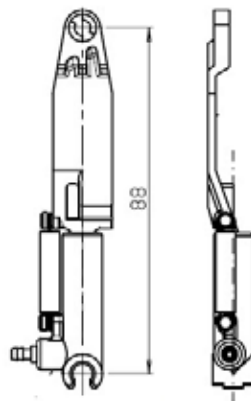
VTF004016D



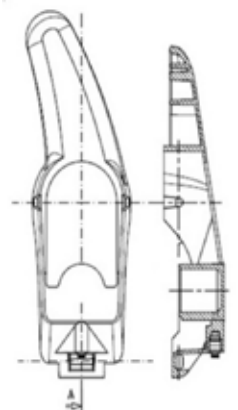
VFT450089502



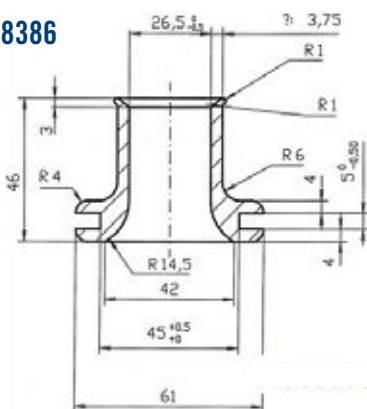
FT45007820



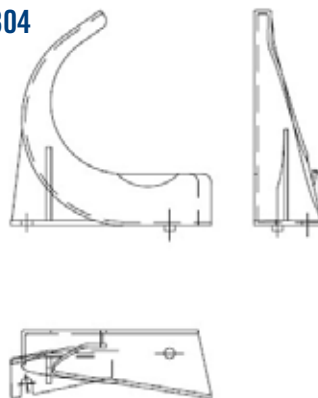
FT450051201



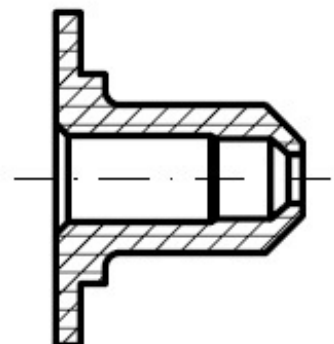
FT008386



FT0189304



FT004024D



OPEN AND SPARE PART

TWIN DISC



ROTORS



COMBING ROLLERS



NAVELS



NOTES

A blank sheet of lined paper with horizontal ruling lines and a dotted yellow border. The paper is white with light blue horizontal lines. The border consists of a dotted yellow line on the left and right sides. The top of the page has a yellow header with the word 'NOTES' in blue. The bottom of the page has a dark blue footer.



RiMax Technology Srl

Piazza Garibaldi 7 · 21013 GALLARATE (VA) SEDE OPERATIVA: Via Fratelli di Dio 1 · 21052 BUSTO ARSIZIO (VA)
Tel +39 0331 1547396 · Fax +39 0331 1812358
e-mail: info@rimaxtechnology.com

www.rimaxtechnology.com